

**SKELETON GRAPPLE**

PAGE 2



**Jenkins**  
IRON & STEEL

**HEAVY DUTY SKIDSTEER  
& LOADER ATTACHMENTS**

**2026  
CUSTOMER CATALOG**



PAGE 3

**SUPER DUTY BRUSH GRAPPLE**



SCAN FOR  
FULL PRICE LIST



23023 US 71  
LONG PRAIRIE MN, 56347  
1.855.732.3843

**OUR TOP SELLERS**

**SKELETON GRAPPLES**

The Jenkins Iron & Steel **Skeleton Rock and Brush Grapples** are the most versatile grapples that we produce built to withstand the abuse of the most powerful skid loaders on the market while at the same time being an invaluable tool for smaller machines.

The Jenkins Iron & Steel **Super Duty Skeleton Rock and Brush Grapples** is meant to be run on heavier, larger machines - typically in the 90hp class. Some of the things that make the Super-Duty version of this attachment so impressive are: 3/4" Grapple Walls, Full Cylinder Protection, 1/2" Grapple Teeth and a 3/4" Front Serrated Cutting Edge.

- » bolt on side plates
- » 3" spacing between teeth
- » fully greasable pivot points
- » hydraulic covers included

**SKELETON GRAPPLE**

48" Single	<b>\$2,350</b>
62" Single	<b>\$2,650</b>
62"	<b>\$3,050</b>
68"	<b>\$3,100</b>
74"	<b>\$3,150</b>
78"	<b>\$3,200</b>
84"	<b>\$3,250</b>

**SUPER DUTY SKELETON GRAPPLE**

74"	<b>\$4,100</b>
78"	<b>\$4,200</b>
84"	<b>\$4,300</b>

**BRUSH MOWERS**

The Jenkins Iron & Steel **Brush Mower** was designed with versatility in mind. Utilizing Eaton Char-Lynn hydraulics into a gear box this mower simply cuts better, faster and more quietly than others on the market! Dual swing away blades are capable of hacking down up to 5" diameter material while doing a very nice job on grasses as well.

The heavy-duty Jenkins Iron & Steel **Direct Drive Brush Mower** is a step up from average brush mowers. Utilizing a direct drive motor, as opposed to the standard gearbox, and a 1/4" thick free floating deck, this 4-blade brush mower is ready for any challenge, including trees up to 8" in diameter.

- » Eaton Char-Lynn motor
- » standard flow rate 14-25 gpm

**BRUSH MOWER**

5'	<b>\$5,400</b>
6'	<b>\$5,650</b>
7'	<b>\$6,100</b>
Wheel Kit	<b>\$500</b>
Push Bar	<b>\$300</b>

**DIRECT DRIVE BRUSH MOWER**

6'	<b>\$6,400</b>
7'	<b>\$6,800</b>
Wheel Kit	<b>\$500</b>
Push Bar	<b>\$300</b>



**OUR TOP SELLERS**

**BRUSH GRAPPLES**

The Jenkins Iron & Steel **Brush Grapple** will literally take a huge bite out of the time you spend cleaning up brush, logs, roots, large rocks, and concrete. With a 50" bite powered by twin 2.5" bore cylinders and shark tooth serrations on all of the 3/4" tines, laterally gusseted with 3/8" plate.

The Jenkins Iron & Steel **Super Duty Brush Grapple** will literally take a huge bite out of the time you spend cleaning up brush, logs, roots, large rocks, and concrete. With a 50" bite powered by twin 2.5" bore cylinders and shark tooth serrations on all of the hardened 3/4" teeth laterally gusseted with 3/8" hardened plate.

- » 2 - 2.5" bore cylinders
- » replaceable pin on, serrated teeth
- » independent grapple arms (Super Duty)

**BRUSH GRAPPLE**

66"	<b>\$3,200</b>
76"	<b>\$3,300</b>
86"	<b>\$3,400</b>

**SUPER DUTY BRUSH GRAPPLE**

66"	<b>\$3,800</b>
76"	<b>\$4,000</b>
86"	<b>\$4,300</b>



**SNOW BUCKET**

The Jenkins Iron and Steel High Volume Heavy Duty Snow and Material Buckets have been put to the ultimate test for years from the casual driveway cleaner to the largest of commercial snow removal companies all over the country. No matter what the application, these buckets simply work and last. We firmly believe that these are the most indestructible high volume buckets on the market and we are constantly backed up by testimonials from our dedicated customers who use and abuse these buckets year after year. Being a Minnesota company we understand the importance of a high quality, usable snow bucket at an affordable price and that is exactly what we produce.

- » 3' tall, 3 1/2' deep for high volume
- » 3/4" reversible bolt on cutting edge

6'	<b>\$2,000</b>
7'	<b>\$2,100</b>
8'	<b>\$2,200</b>
9'	<b>\$2,300</b>
10'	<b>\$2,500</b>
12'	<b>\$3,100</b>



**OUR TOP SELLERS**

**PALLET FORKS**

The Jenkins Iron & Steel **Pallet Fork's** heavy-duty walkthrough carriage is constructed of 1/4" screen material with a 1.25" by 3" machined down top slider bar and a 3/4" lower slider bar making it as tough as you will find. The slider rails are machined so that you can move the forks easily with one hand.

The Jenkins Iron & Steel **Hydraulic Sliding Pallet Forks** are as durable as they come! The slider rails are machined in house and we only use 5500 lb capacity forks! The walk through carriage is designed to allow the skid steer door to swing over the top making it easy to get out of the cab with the forks attached and they have as much roll back as possible for today's cab-forward machines!

- » adjustable forks rated at 5500 lbs
- » manually adjustable
- » other sizes available, contact for pricing

**PALLET FORKS**

Carriage	Forks	
4'	4'	<b>\$1,100</b>
5'	5'	<b>\$1,300</b>
6'	6'	<b>\$1,500</b>

**HYDRAULIC SLIDING PALLET FORKS**

Carriage	Forks	
4'	4'	<b>\$2,150</b>
5'	5'	<b>\$2,350</b>
6'	6'	<b>\$2,550</b>

**10,000 LBS CAPACITY**

Carriage	Forks	
4'	4'	<b>\$2,400</b>
5'	5'	<b>\$2,800</b>
6'	6'	<b>\$3,300</b>



**STUMP GRINDER**

The Jenkins Iron & Steel heavy duty Stump Grinder with hydraulic swing and depth control and a 25" diameter cutting wheel, will shear your stumps to dust, rather than shred making it more efficient for more power. The carbide Greenteeth can be rotated 3 times before having to replace them.

- » Eaton Char-Lynn motor
- » hydraulically adjustable (vertical & horizontal)
- » 700 series carbide green teeth

One Size	<b>\$5,750</b>
----------	----------------



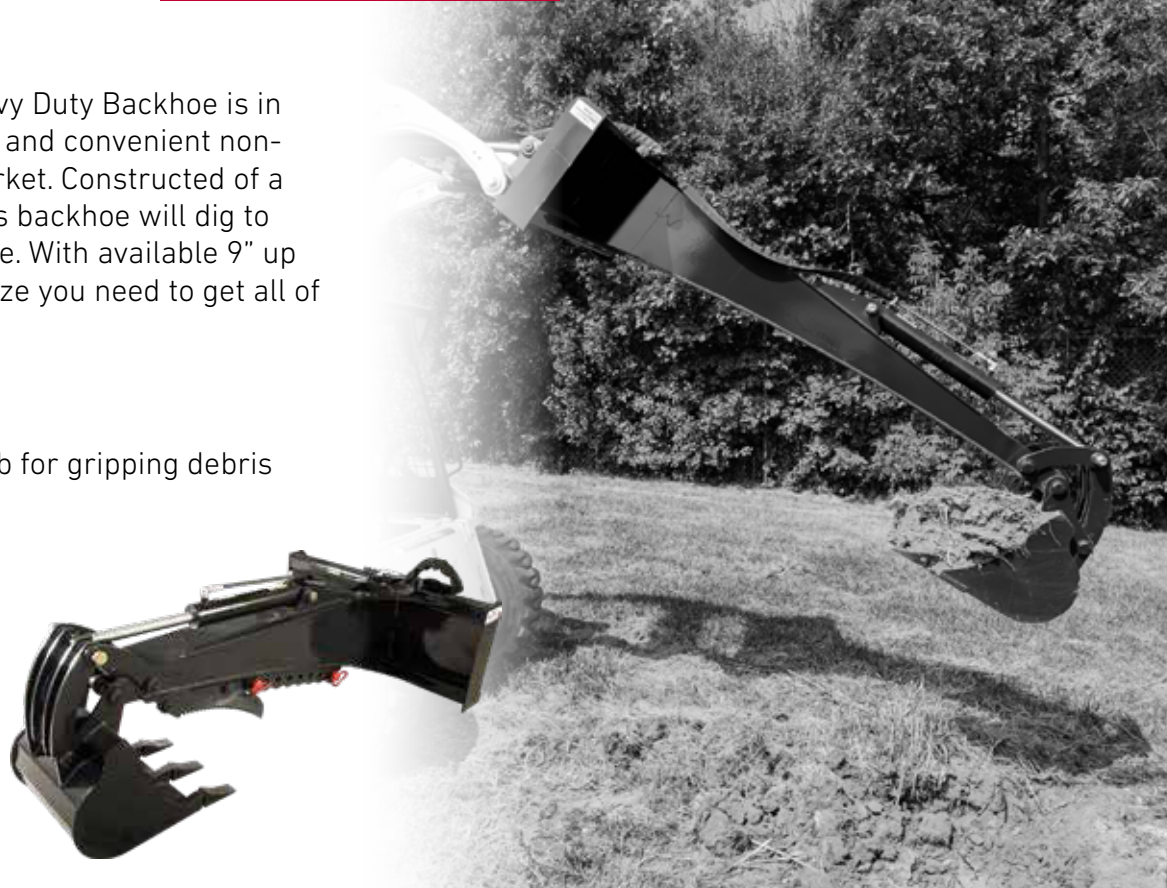
**OUR TOP SELLERS**

**BACKHOE**

The Jenkins Iron & Steel Heavy Duty Backhoe is in our opinion the most durable and convenient non-swinging backhoe on the market. Constructed of a heavy-duty full box frame this backhoe will dig to 6 ½ and 8 ½ feet like a breeze. With available 9" up to 24" buckets we have the size you need to get all of your digging needs done

- » 6.5' or 8.5' dig depth
- » replaceable pin on teeth
- » optional mechanical thumb for gripping debris

6.5' w/ 9"	<b>\$2,350</b>
6.5' w/ 12"	<b>\$2,450</b>
6.5' w/ 18"	<b>\$2,550</b>
6.5' w/ 24"	<b>\$2,650</b>
8.5' w/ 9"	<b>\$2,500</b>
8.5' w/ 12"	<b>\$2,550</b>
8.5' w/ 18"	<b>\$2,675</b>
8.5' w/ 24"	<b>\$2,800</b>
Thumb	<b>\$300</b>



**EXTENDABLE BOOM**

The Jenkins Iron & Steel commercial hydraulic Extendable Boom is the perfect tool for truss installation, building erection, pole setting, roofing and a host of other applications. Utilizing the speed and efficiency of a skid steer/tractor loader, the Extendable Boom will save time and money for contractors and farmers.

- » 10' retracted length
- » 6' hydraulically operated second section and a 4' manually third section for a total of 20'
- » safety rated for 400lbs at 20' on 1800lb ROC machines
- » safe tipping load will vary by machine ROC

One Size	<b>\$2,950</b>
----------	----------------





**DEBRIS GRAPPLE**



- » 1/2" material
- » 1/2" serrated cutting edge
- » 6" spacing between teeth
- » hydraulics covers included

64"	<b>\$3,000</b>
72"	<b>\$3,050</b>
78"	<b>\$3,150</b>
84"	<b>\$3,200</b>

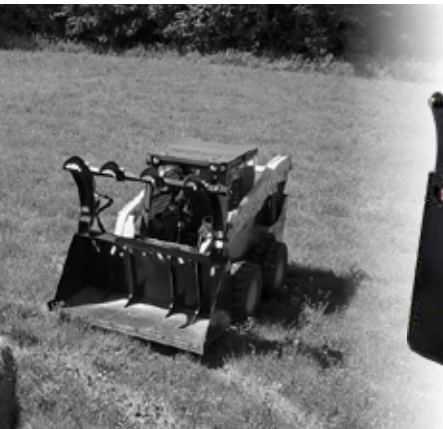


**TINE GRAPPLE**



- » 2 1/4" round tines
- » 1/2" grapple claw thickness
- » 4" spacing between tines
- » hydraulic covers included

63"	<b>\$3,150</b>
70"	<b>\$3,250</b>
78"	<b>\$3,350</b>
83"	<b>\$3,450</b>
88"	<b>\$3,550</b>



**HIGH CAPACITY GRAPPLE BUCKET**



- » 3/16" bucket material with 5/16" end plates
- » extremely high volume
- » 80" opening

6'	<b>\$3,600</b>
7'	<b>\$3,700</b>
8'	<b>\$3,800</b>



**LOW PROFILE HD GRAPPLE BUCKET**



- » 1/4" bucket material
- » 3/4" reversible bolt on cutting edge
- » removable bolt on side plates
- » hydraulic covers included

62"	<b>\$2,750</b>
68"	<b>\$2,850</b>
74"	<b>\$2,950</b>
78"	<b>\$3,050</b>
84"	<b>\$3,150</b>



**ROCK BUCKET**



- » 3/8" material
- » 1/2" serrated cutting edge
- » 3" spacing between teeth

62"	\$1,550
68"	\$1,600
74"	\$1,650
78"	\$1,700
84"	\$1,750



**HIGH DUMP BUCKET**



- » 51" increased dump height
- » 3/4" reversible bolt on cutting edge
- » screening back for visibility

62"	\$3,450
68"	\$3,550
74"	\$3,650
78"	\$3,750
84"	\$3,850

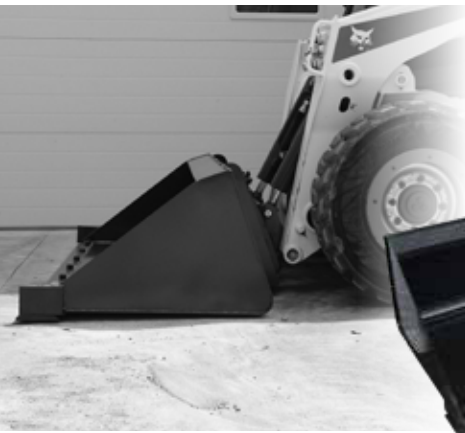


**LANDSCAPE BUCKET**



- » 3/4" reversible bolt on cutting edge
- » 3/16" bucket material
- » exact yardage bucket

1/2 yd (58")	\$1,550
1 yd (62")	\$1,750



**LOW PROFILE DIRT BUCKET**



- » heavy duty 3/4" cutting edge
- » 3/16" bucket material

62"	\$1,400
68"	\$1,450
74"	\$1,500
78"	\$1,550
84"	\$1,600

**LOW PROFILE HD DIRT BUCKET**



- » heavy duty 3/4" cutting edge
- » 1/4" bucket material

62" HD	<b>\$1,550</b>
68" HD	<b>\$1,600</b>
74" HD	<b>\$1,650</b>
78" HD	<b>\$1,700</b>
84" HD	<b>\$1,750</b>
96" HD	<b>\$1,900</b>

**LOW PROFILE HD DIRT BUCKET W/ TEETH**



- » heavy duty 3/4" cutting edge
- » 1/4" bucket material
- » pin on replaceable teeth

62" HD	<b>\$1,700</b>
68" HD	<b>\$1,800</b>
74" HD	<b>\$1,900</b>
78" HD	<b>\$2,000</b>
84" HD	<b>\$2,100</b>
96" HD	<b>\$2,200</b>

**4 IN 1 BUCKET**



- » used for dozing, land leveling, grappling, dumping etc
- » 3 reversible, 3/4" replaceable cutting edges
- » can be fitted with replaceable tip excavator teeth

72"	<b>\$3,900</b>
78"	<b>\$4,150</b>
82"	<b>\$4,350</b>

**4 IN 1 BUCKET W/ TEETH**



- » used for dozing, land leveling, grappling, dumping etc
- » 3 reversible, 3/4" replaceable cutting edges
- » pin on replaceable teeth

72"	<b>\$4,050</b>
78"	<b>\$4,300</b>
82"	<b>\$4,550</b>

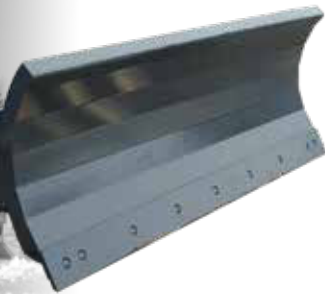
**DOZER BLADE**



- » full hydraulic tilt
- » 5/16" face plate gusseted throughout
- » reversible & replaceable bolt on cutting edge
- » commercial grade

6'	<b>\$4,950</b>
7'	<b>\$5,150</b>
8'	<b>\$5,350</b>

**HYDRAULIC ANGLE SNOW BLADE**



- » full trip blade with dual cylinder hydraulic angle
- » adjustable blade height
- » bolt on replaceable cutting edge

6'	<b>\$3,050</b>
7'	<b>\$3,150</b>
8'	<b>\$3,250</b>
9'	<b>\$3,350</b>
10'	<b>\$3,450</b>

**HYDRAULIC ANGLE WINGED SNOW BLADE**



- » 2' hydraulic wings
- » oscillating quick attach plate
- » full trip edge
- » full trip wing edges

6' + 4'	<b>\$6,900</b>
7' + 4'	<b>\$7,000</b>
8' + 4'	<b>\$7,100</b>

**SNOW PUSHER**



- » steel cutting edge
- » free floating skid plates
- » optional back drag (BD)
- » high volume screen (HVS)
- » rubber edge available (RE)

7'	<b>\$2,350</b>
8'	<b>\$2,450</b>
10'	<b>\$2,700</b>
BD	<b>\$400 - \$550</b>
HVS	<b>\$400 - \$550</b>



**DELUXE SNOW PUSHER**



- » oscillating quick attach plate
- » full trip cutting edge
- » free floating sides
- » Optional high volume screen or back drag

6'	<b>\$3,300</b>
8'	<b>\$3,500</b>
10'	<b>\$3,700</b>
BD	<b>\$375 - \$550</b>
HVS	<b>\$375 - \$550</b>



**EARTH AUGER**



- » 2" hex drive unit
- » self centering
- » heavy duty commercial frame
- » combo kits available
- » rock bits available

Hydraulic Drive	<b>\$2,175</b>
Drive + 9" & 12"	<b>\$2,750</b>
Drive + 9" & 18"	<b>\$2,950</b>
Drive + 12" & 18"	<b>\$3,000</b>
Drive + 9", 12" & 18"	<b>\$3,250</b>
4" Auger Bit	<b>\$230</b>
6" Auger Bit	<b>\$242</b>
9" Auger Bit	<b>\$342</b>
12" Auger Bit	<b>\$396</b>
15" Auger Bit	<b>\$515</b>
18" Auger Bit	<b>\$625</b>
20" Auger Bit	<b>\$685</b>
24" Auger Bit	<b>\$750</b>
30" Auger Bit	<b>\$1,000</b>
36" Auger Bit	<b>\$1,245</b>
2' Auger Extension	<b>\$325</b>
3' Auger Extension	<b>\$375</b>
4' Auger Extension	<b>\$425</b>



**TRENCHER**



- » double standard ABF
- » welded teeth w/ cemented carbide edges
- » dig depth 24" - 60"
- » trench cleaner available
- » for bigger sizes, contact for pricing

Starting at:	<b>\$6,300</b>
--------------	----------------



**LAND LEVELER**



- » replaceable 1/2" cutting edges
- » removable, replaceable screening for sifting, scooping material and rock
- » durable tube frame
- » optional scarifying teeth
- » top mounted bucket hooks

68"	<b>\$1,900</b>
74"	<b>\$2,000</b>
78"	<b>\$2,100</b>
84"	<b>\$2,200</b>
68" w/ teeth	<b>\$2,350</b>
74" w/ teeth	<b>\$2,450</b>
78" w/ teeth	<b>\$2,550</b>
84" w/ teeth	<b>\$2,650</b>



**SOIL CONDITIONER**



- » Eaton Char-Lynn hydraulic motor that is both standard & high flow ready
- » 10" drum spinner
- » 4"x8" heavy walled rectangular backbone

6'	<b>\$7,400</b>
7'	<b>\$7,600</b>



**TILLER**



- » dual Eaton Char-Lynn motors
- » 4 swing away blades per spindle
- » bi-directional tilling
- » zero maintenance direct drive

5'	<b>\$3,900</b>
6'	<b>\$4,200</b>
7'	<b>\$4,500</b>



**POST & TREE PULLER**



- » brush guard available
- » 3" x 3" tube frame
- » 1/2" steel teeth
- » 3000lb hydraulic cylinder
- » 17" opening

No Guard	<b>\$1,600</b>
with Guard	<b>\$1,850</b>



**SUPER DUTY POST & TREE PULLER**



- » brush guard standard
- » serrated ripping teeth
- » 1" steel plating
- » replaceable excavator teeth

One Size	<b>\$3,850</b>
----------	----------------



**STUMP BUCKET**



- » 1/2" steel bucket
- » 12" wide bucket
- » replaceable pin on teeth
- » overall length 64"

64" L	<b>\$1,350</b>
-------	----------------



**STUMP BUCKET GRAPPLE**



- » 1/2" steel bucket
- » overall length 64"
- » replaceable pin on teeth
- » serrated top edge

64" L	<b>\$1,925</b>
-------	----------------



**WOOD SPLITTER**



- » inverted style 36" bite monster
- » 5" 30 ton cylinder and l-beam construction
- » single split AR-400 abrasion resistant blade

One Size	<b>\$3,250</b>
4 Way Blade	<b>\$3,350</b>



**BALE SPEAR**



- » 49" or 39" German spears
- » heavy duty square box frame
- » modified to fit a variety of tractor loader models

2 Prong 49" Spears	<b>\$1,100</b>
3 Prong Sgl. Round	<b>\$1,000</b>
4 Prong Dbl. Round 49" Spears	<b>\$1,500</b>
4 Prong Sq. Bales 39" Spears	<b>\$1,250</b>
Hydraulic Double Round Bale Spear	<b>\$2,500</b>



**HYDRAULIC ANGLE SWEEPER**

- » hydraulic angle
- » poly and stainless steel bristles
- » Eaton Char-Lynn motors

4'	<b>\$4,900</b>
5'	<b>\$5,000</b>
6'	<b>\$5,100</b>
7'	<b>\$5,200</b>
8'	<b>\$5,300</b>



**PICKUP BUCKET SWEEPER BROOM**

- » Eaton Char-Lynn motor
- » steel and poly combo bristles
- » commercial bucket w/ 3/4" reversible bolt on cutting edge

74"	<b>\$4,600</b>
84"	<b>\$4,800</b>



**CONCRETE HOPPER**

- » commercial grade 3/4 yard
- » gusseting on all wear points
- » center mounted hydraulic controlled chute
- » removable chute extension

One Size	<b>\$1,950</b>
----------	----------------



**ICE SCRAPER**

- » quickly removes frozen or hardened build up from solid surfaces
- » replaceable self sharpening disc
- » commercial grade frame

One Size	<b>\$1,100</b>
----------	----------------



**RECEIVER HITCH**



- » makes moving trailers, implements and goose necks easier
- » long snout enables easy visibility
- » top gussets strengthen hitch

45" L	<b>\$400</b>
-------	--------------



**QUICK ATTACH PLATES**



- » 5/16" thick plate
- » full and partial backer plates available

Partial	<b>\$175</b>
Solid	<b>\$200</b>



**TREE SHEER**



- » 6" 42 ton cylinder
- » Hydraulic rotate
- » AR 400 blade
- » 12" diameter cut

6'	<b>\$6,500</b>
----	----------------



## SKELETON GRAPPLE

PAGE 2



Jenkins Iron & Steel was born out of desire to put out the highest quality, most durable attachments on the market at prices that everyone can afford. Through the use of state of the art manufacturing techniques, top quality American steel, and quality control through the oversight of every attachment, they have achieved their goal. Simply put, if it has the Jenkins name on it you can count on it to work, day in and day out, through whatever you can throw at it.



PAGE 3

## BRUSH GRAPPLE

Jenkins Iron & Steel is owned and operated by Marty & Karen Jenkins and their 3 sons, Kurt, Patrick and Eric. What started as a 1 hand-painted bucket a day hobby in the family shop, turned into a 125-150 attachment a day operation that now employs over 80+ people, has 20+ robotic welders, 3 laser cutters running 24 hours a day and an automated powder-coating booth, building over 45 different models of skid steer attachments to cover a wide range of project needs.



PAGE 5

## EXTENDABLE BOOM

“ Our goal has always been to provide stronger, better attachments and a level of customer service that just can't be matched. We stand behind absolutely everything we build. When we say we're a family owned business, it means if you have an issue with anything on your Jenkins attachment, you can call our office and speak to a Jenkins who knows the attachments, puts their name on the attachments and wants to take care of the customers that buy a Jenkins attachment. ”

- Kurt Jenkins